

An aerial view of a modern city skyline, likely Singapore, featuring numerous skyscrapers and a waterfront area with a large body of water and a bridge. The sky is blue with some clouds.

Nviroclean

WHAT THE WORLD'S CLEANEST HOSPITALS ALREADY KNOW.

Nviroclean • Medical & Hospital Division

EPA Subpart J • NSF J1 Food-Safe • Non-Carcinogenic IARC • DOT/OSHA • TCLP Tested



THE WORLD'S STANDARD IS SET IN SINGAPORE.

Ranked #1 Healthcare System Globally

World Health Organization & Statista 2023

Most Efficient Healthcare in the World

Bloomberg Global Health Index

Trusted by Singapore Healthcare Distributors

Vidaverde International supplies Nviroclean to
healthcare facilities across Singapore



EPA Subpart J • NSF J1 Food-Safe • Non-Carcinogenic IARC • DOT/OSHA • TCLP Tested

THIS IS WHAT YOUR STAFF DEALS WITH EVERY DAY.

Paper towels. Bleach. Repeat. Every wipe spreads the pathogen further.

'EVERY HOSPITAL FLOOR HAS A SPILL RIGHT NOW.'



Blood



Urine



IV fluid



Vomit



OSHA-regulated
waste

"— handled with paper towels and bleach."

"The floor stays closed 20–30 minutes. The pathogen spreads. The staff is exposed."

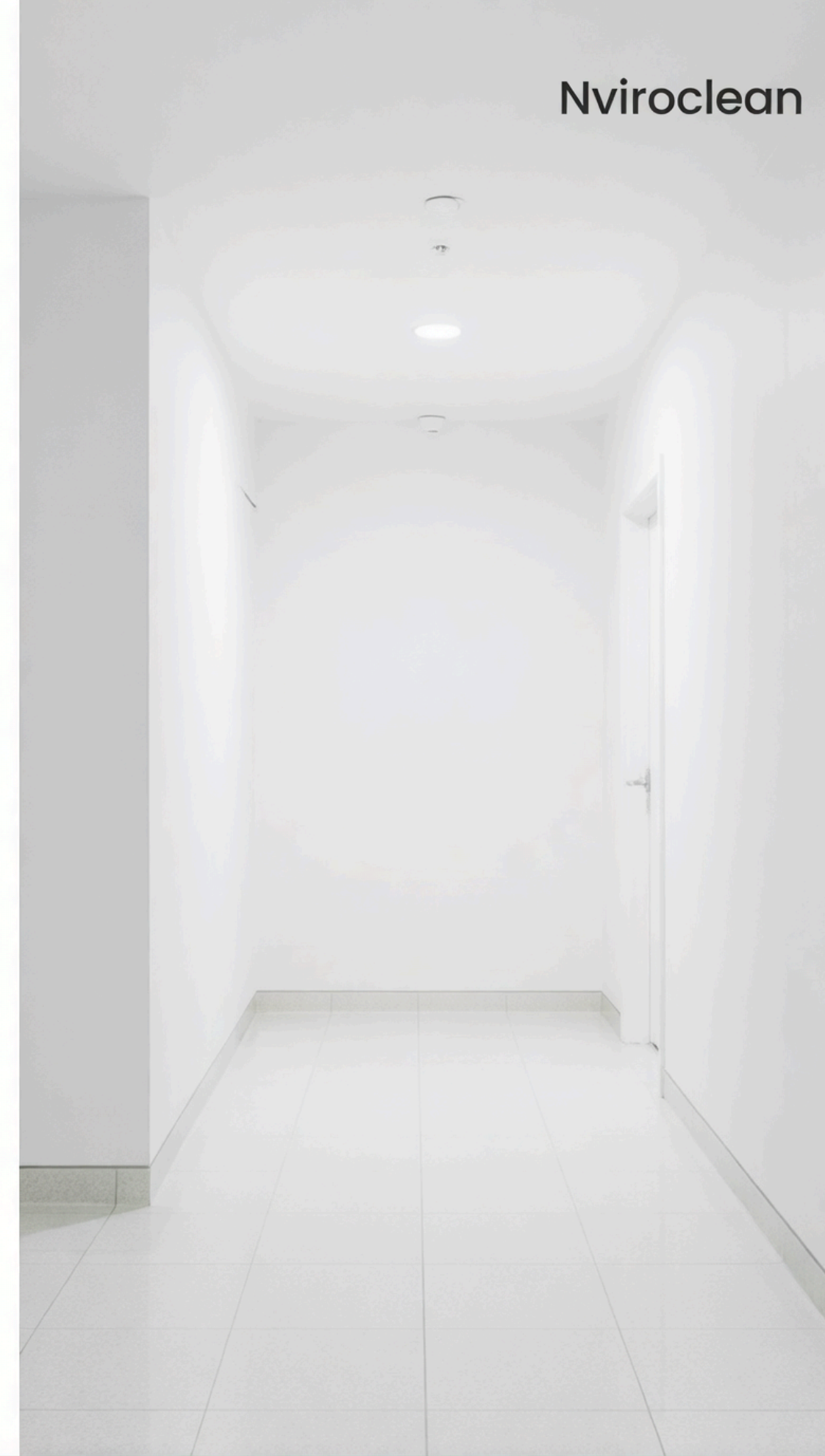
THE DAILY REALITY: PATIENT AREAS

Blood, Urine & IV Fluid Spills

ER floors, patient rooms, and hallways face constant fluid exposure. OSHA classifies all blood spills as regulated waste requiring controlled cleanup.

Paper Towels & Bleach Spread the Problem

Standard protocol smears pathogens across the surface. Bleach requires 20–30 minutes of contact time — floor closed, staff exposed, incident unresolved.



ONE PRODUCT. EVERY FLUID. EVERY FLOOR.



Blood



Urine



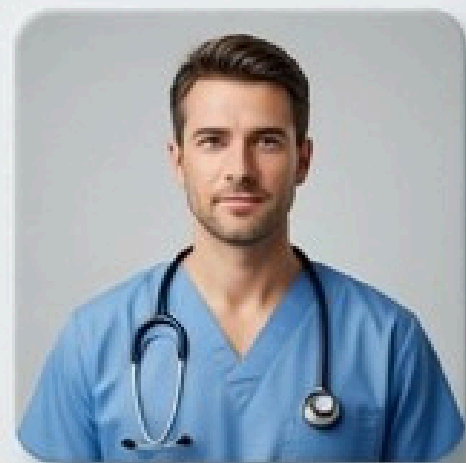
Vomit



Feces



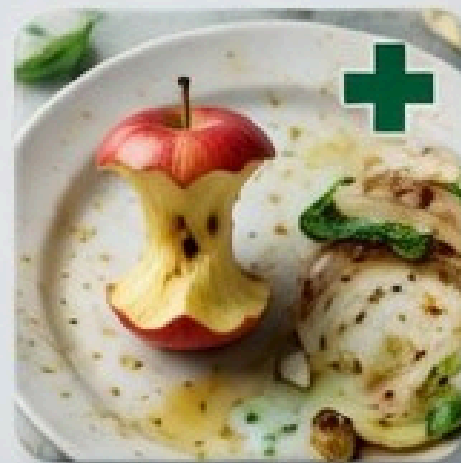
IV Fluid



IV Fluid



Chemicals



Food Waste



Solvents



Cleaning Agents

THE KITCHEN. THE LAUNDRY. THE LOADING DOCK.
Food waste. Chemical spills. Vomit. The same 5-step failure. Every shift.



THE SCIENCE.

Chapter Three.

Where containment is engineered, not improvized.

ON THE SURFACE. OR LOCKED INSIDE.



PIG Mat & Paper Towels — Adsorption.

Pathogen clings to the exterior. Every fold, every lift, every bag is an exposure event. OSHA biohazard disposal mandatory.

Nviroclean — Encapsulation.

Contaminant bonded into the molecular cavity. Inert exterior. Standard bin. No biohazard bag. No regulated waste.

THE SCIENCE OF THE PROBLEM

20–30 Minutes

Required bleach contact time per CDC and OSHA bloodborne pathogen protocol. Floor closed. Staff idle.

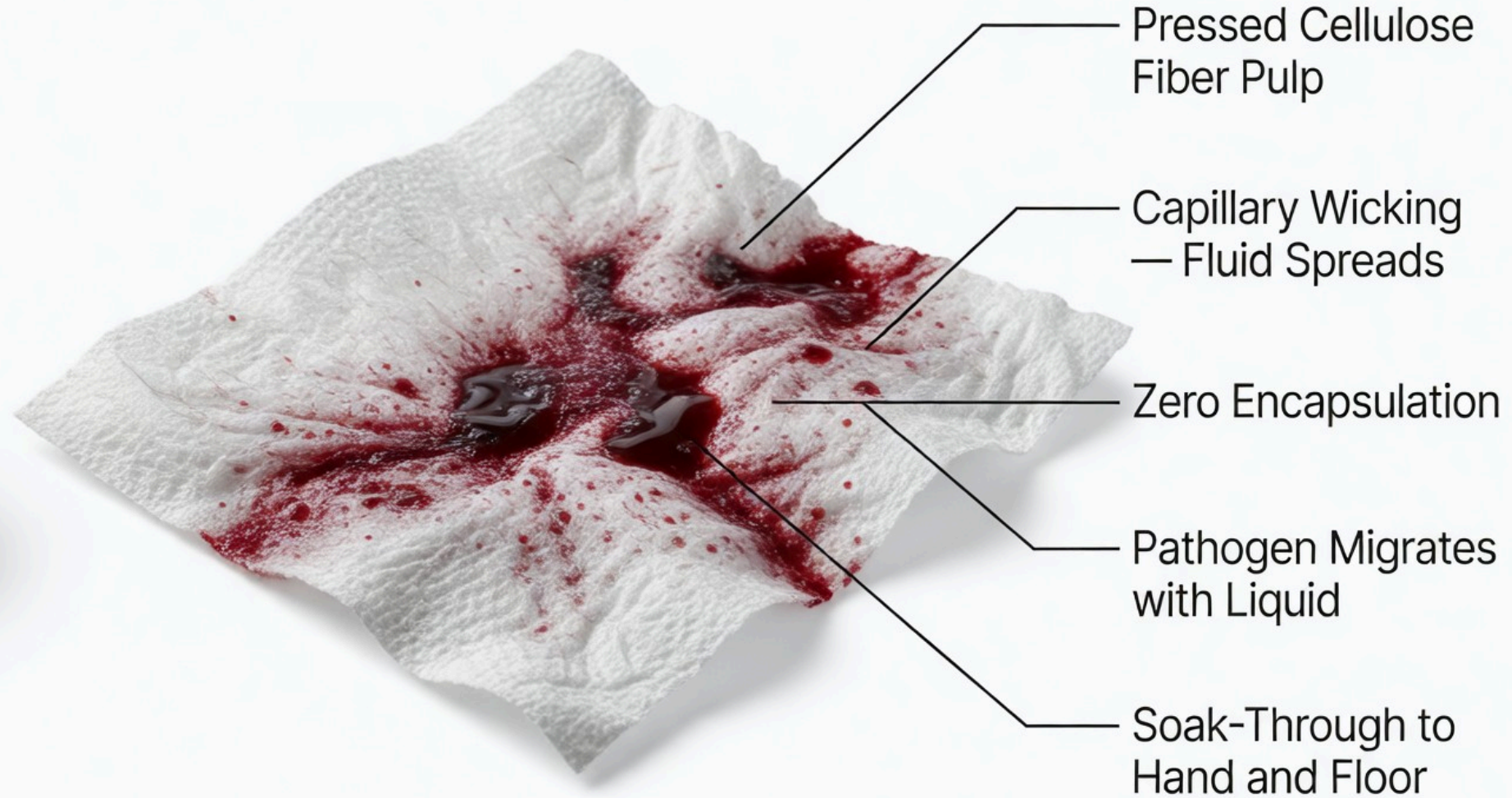
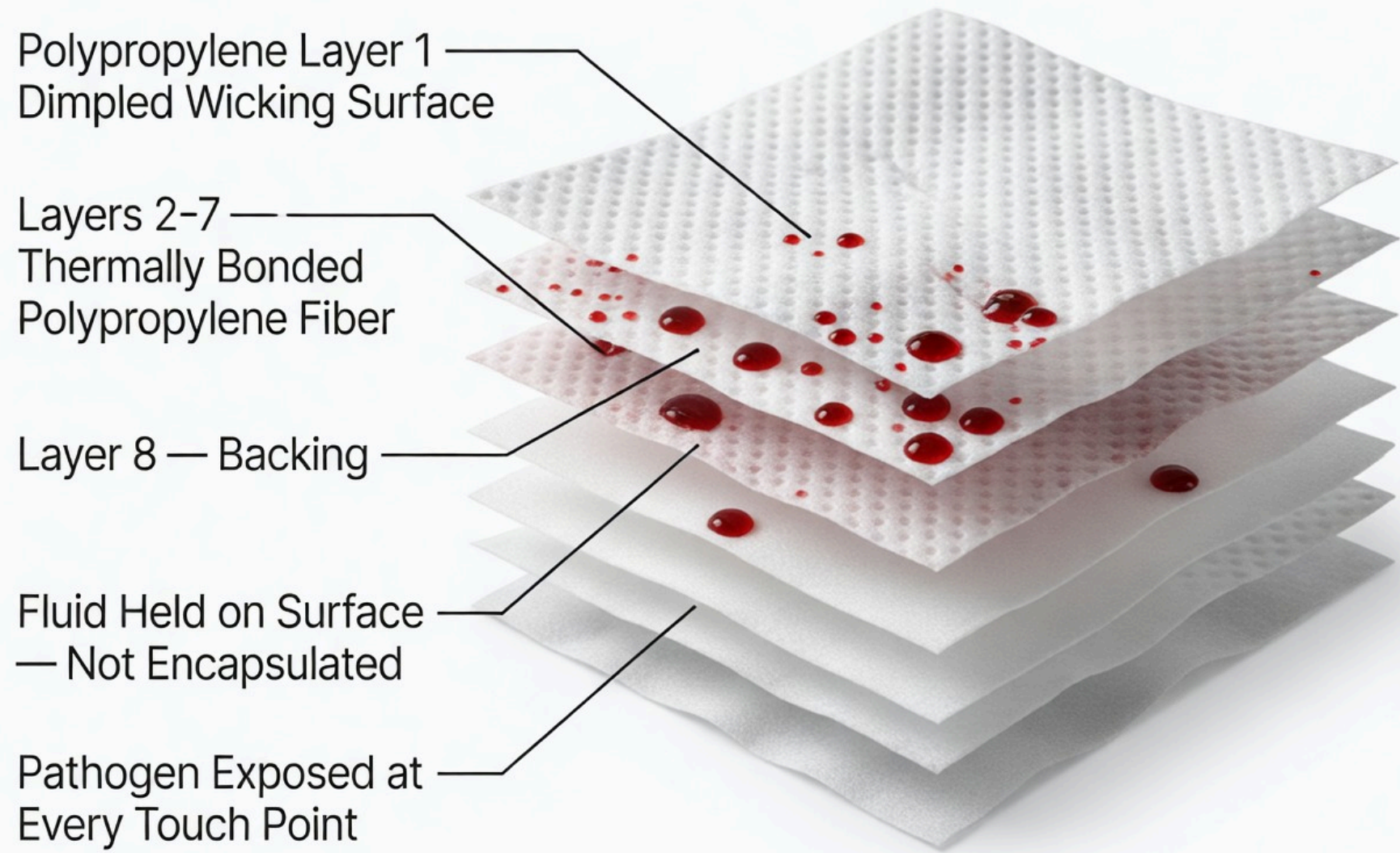
5+ Steps. Every Single Spill.

Absorb. Wipe. Apply bleach. Wait. Wait. Re-wipe. Bag. Dispose. PIG mats and bio-kits multiply exposure risk at every step.

Regulated Waste. Every Time.

OSHA 29 CFR 1910.1030 — all blood and body fluid spills are classified as regulated biological waste. Every towel, every pad, every wipe is a disposal liability.

WHY THE BIOHAZARD BAG IS MANDATORY.



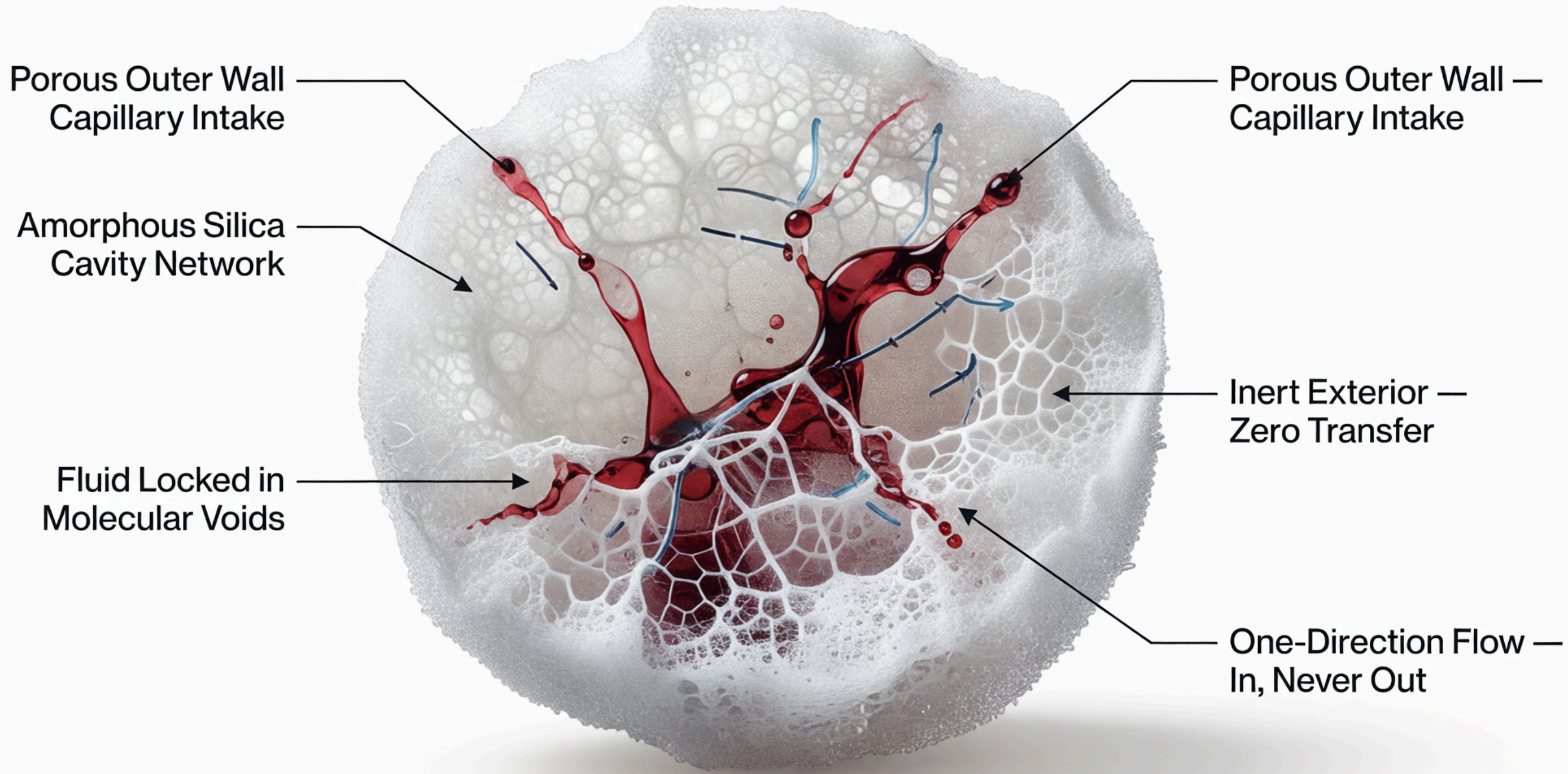
Neither material contains the hazard. They relocate it.

Adsorption only. Encapsulation never. OSHA 29 CFR 1910.1030 — regulated waste, every time.

ENCAPSULATION. NOT ADSORPTION.

The contaminant goes in. It does not come out.

Amorphous alumina silica — engineered hollow molecular structure bonds liquid indefinitely. Landfill safe. Zero regulated waste.



PERLITE IS THE ROCK. NVIROCLEAN IS THE SCIENCE.

Both start as volcanic glass. Only one is engineered for spill containment.

Generic Perlite

Raw Volcanic Aggregate



Sold for Soil
and Insulation

Nviroclean

Proprietary Refinement



Engineered for
Spill Containment

Raw perlite is a generic aggregate. Nviroclean is a proprietary refinement of amorphous alumina silica, engineered to a performance grade perlite cannot reach. The difference is not the source. The difference is the science.

THE PARTNERSHIP.

Chapter Five.

Equip your facility. Protect your people.

COMPLIANCE BUILT IN. NOT BOLTED ON.



EPA Subpart J

Meets federal leaching standards.
Landfill safe after use.



NSF J1 Food-Safe

Safe around patients and food service.
No risk of secondary contamination.



Non-Carcinogenic IARC

Daily staff use.
No PPE anxiety.
No long-term exposure risk.



DOT / OSHA

Fully compliant for transport and workplace spill response.



TCLP Tested

Zero disposal penalty.
Standard bin.
No hazmat fees.

One product. Five certifications. Zero liability.

THE MATH IS NOT CLOSE.



Per incident. Per year. Per facility.

TRADITIONAL METHOD

\$S\$1,888

per spill incident

30 min downtime

5+ steps

Red bag mandatory

20–30 min bleach contact

NVIROCLEAN

\$S\$310

per spill incident

5 min downtime

3 steps

Red bag recommended (belt & suspenders)

5 min bleach max — testable at 2 min

83% Cost Reduction

per incident

6–15x Faster

bleach contact time vs OSHA standard

\$S\$595K–\$S\$789K

annual savings, 250-bed facility
(~500 incidents/yr)

Red bag disposal still recommended as best practice — human-error protection, not product limitation. Figures shown in Singapore Dollars (SGD). USD/SGD 1.28.

THE MATH IS NOT CLOSE.

nviroclean

Per incident. Per year. Per facility.

METRIC	TRADITIONAL METHOD	NVIROCLEAN
Cost Per Incident	\$1,172–\$1,475	\$190–\$242
Bleach Contact Time	20–30 min mandated	5 min max · testable at 2 min
Room Downtime	30+ minutes	5 minutes
Steps in Protocol	5+	3
Red Bag Policy	Mandatory	Recommended (belt & suspenders)

83% Cost Reduction

per incident

6–15x Faster

bleach contact time vs OSHA standard

\$465K–\$616K

annual savings, 250-bed facility
(~500 incidents/yr)

Red bag disposal still recommended as best practice — human-error protection, not product limitation.

THE MATH IS NOT CLOSE.

nviroclean

Per incident. Per year. Per facility.

TRADITIONAL METHOD

\$1,475

per spill incident

30 min downtime

5+ steps

Red bag mandatory

20–30 min bleach contact

NVIROCLEAN

\$242

per spill incident

5 min downtime

3 steps

Red bag recommended (belt & suspenders)

5 min bleach max — testable at 2 min

83% Cost Reduction

per incident

6–15x Faster

bleach contact time vs OSHA standard

\$465K–\$616K

annual savings, 250-bed facility
(~500 incidents/yr)

Red bag disposal still recommended as best practice — human-error protection, not product limitation.

EQUIP YOUR FACILITY.



5lb Bag

Absorbs up to 24lbs of fluid.
Reusable up to 5x.
Landfill safe.



1.5 CF Bag

High-volume facility use.
Pallet available.
Bulk pricing on request.

nviroclean.net

Distributed in Singapore by Vidaverde International • vidaverde-ipl.sg

EPA Subpart J • NSF J1 Food-Safe • Non-Carcinogenic IARC • DOT/OSHA • TCLP Tested.



THE ANSWER.

Chapter Four.
Three steps. Every spill. Every time.